

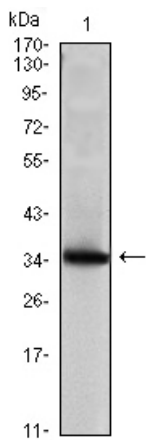


Mammaglobin A Monoclonal Antibody

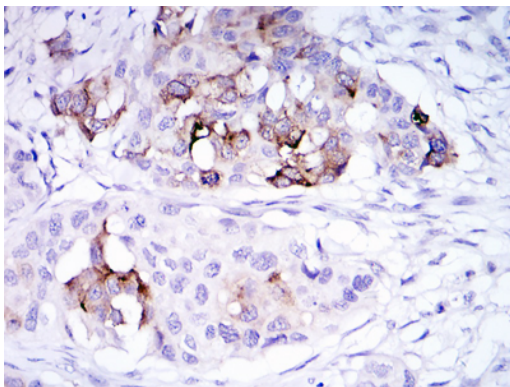
Catalog No	YP-Ab-00072
Isotype	IgG
Reactivity	Human
Applications	WB;IHC;IF;FCM;ELISA
Gene Name	SCGB2A2
Protein Name	Mammaglobin-A
Immunogen	Purified recombinant fragment of human Mammaglobin A expressed in E. Coli.
Specificity	Mammaglobin A Monoclonal Antibody detects endogenous levels of Mammaglobin A protein.
Formulation	Ascitic fluid containing 0.03% sodium azide,0.5% BSA, 50%glycerol.
Source	Monoclonal, Mouse
Purification	Affinity purification
Dilution	Western Blot: 1/500 - 1/2000. Immunohistochemistry: 1/200 - 1/1000. Immunofluorescence: 1/200 - 1/1000. Flow cytometry: 1/200 - 1/400. ELISA: 1/10000. Not yet tested in other applications.
Concentration	1 mg/ml
Purity	≥90%
Storage Stability	-20°C/1 year
Synonyms	SCGB2A2; MGB1; UGB2; Mammaglobin-A; Mammaglobin-1; Secretoglobin family 2A member 2
Observed Band	
Cell Pathway	Secreted .
Tissue Specificity	Mammary gland specific. Over-expressed in breast cancer.
Function	similarity:Belongs to the secretoglobin family. Lipophilin subfamily.,tissue specificity:Mammary gland specific. Over-expressed in breast cancer.,
Background	similarity:Belongs to the secretoglobin family. Lipophilin subfamily.,tissue specificity:Mammary gland specific. Over-expressed in breast cancer.,
matters needing attention	Avoid repeated freezing and thawing!
Usage suggestions	This product can be used in immunological reaction related experiments. For more information, please consult technical personnel.



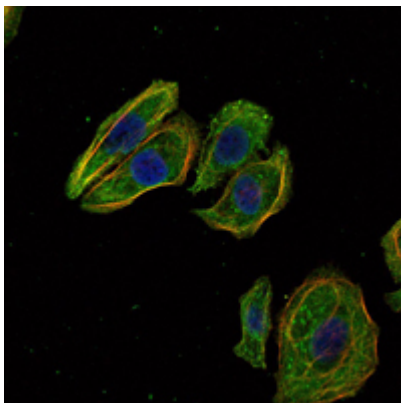
Products Images



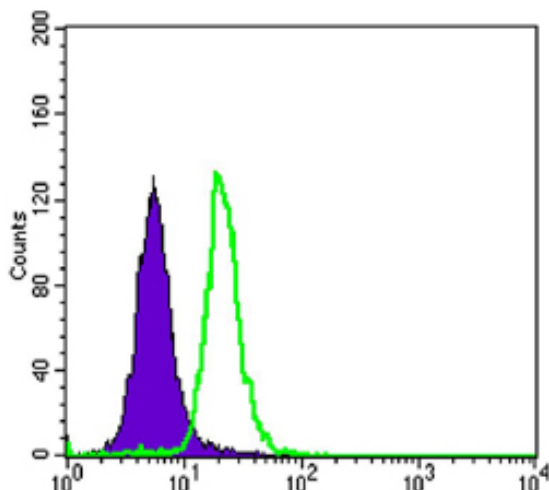
Western Blot analysis using Mammaglobin A Monoclonal Antibody against Mammaglobin A recombinant protein (1).



Immunohistochemistry analysis of paraffin-embedded mammary cancer tissues with DAB staining using Mammaglobin A Monoclonal Antibody.



Immunofluorescence analysis of HeLa cells using Mammaglobin A Monoclonal Antibody (green). Blue: DRAQ5 fluorescent DNA dye. Red: Actin filaments have been labeled with Alexa Fluor-555 phalloidin.



Flow cytometric analysis of SK-BR-3 cells using Mammaglobin A Monoclonal Antibody (green) and negative control (purple).